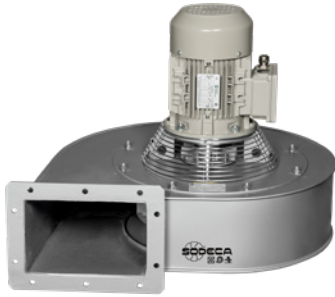


SDLM/F

Centrifugal fans especially designed for extracting hot air from ovens at a max. temperature of 300°C and a horizontal air outlet



Especially designed for bread and pastry ovens as well as industrial ovens



- Fan:**
- Sheet steel casing.
 - Forward curved impeller in galvanized sheet steel.
 - Directly coupled motor with B-5 flange.
 - With one or two cooling disk mounted on the motor shaft to dissipate the heat.

- Maximum temperature of air to be carried: -25 °C +300 °C.

- Finishing:**
- Anticorrosive with temperature resistant anticaloric paint, aluminum color.

- Motor:**
- Motors with IE3 efficiency for powers equal to or greater than 0.75kW, except single-phase, 2-speed and 8-pole.
 - IP55 protection.
 - Three-phase 230/400 V 50 Hz (up to 4 kW) and 400/690 V 50 Hz (powers greater than 4 kW).

- On request:**
- Special windings for different voltages.
 - Stainless steel fan casing.

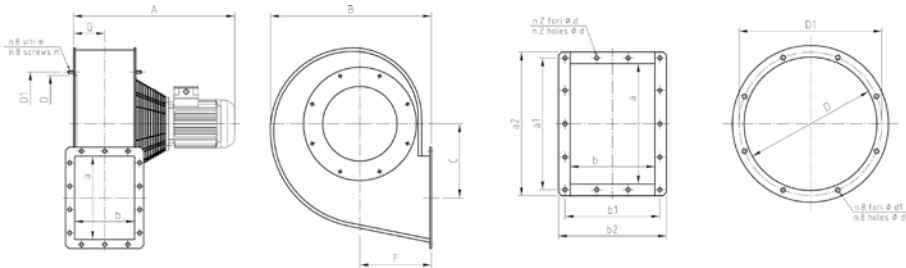
Characteristics

MOD.	kW	r.p.m	dB/A	CAPACITY (m³/s)															
				0.12	0.13	0.15	0.17	0.18	0.2	0.23	0.27	0.3	0.33	0.37	0.42	0.47	0.53	0.6	0.67
				TOTAL PRESSURE (mmH ₂ O)															
SDLM/F-25-4T-0.75	0.55	1360	51	31	32	33	34	35	36	38	40	40	41	40	40	39	34		
SDLM/F-28-4T-1	0.75	1360	56						38	40	42	44	45	47	48	50	52	52	50
SDLM/F-29-4T-1.5	1.1	1380	56							37	39	40	42	44	45	47	48	50	
SDLM/F-33-4T-1.5	1.1	1380	56						60	61	62	62	63	64	65	68	70	72	75
SDLM/F-36-4T-3	2.2	1410	61									71	71	72	74	75	75	76	77
SDLM/F-39-4T-3	2.2	1410	73										84	85	86	87	89	92	95

MOD.	kW	r.p.m	dB/A	CAPACITY (m³/s)															
				0.76	0.83	0.92	1	1.17	1.33	1.5	1.67	1.83	2	2.33					
				TOTAL PRESSURE (mmH ₂ O)															
SDLM/F-28-4T-1	0.75	1360	56	45	40														
SDLM/F-29-4T-1.5	1.1	1380	56	52	50	47	40												
SDLM/F-33-4T-1.5	1.1	1380	56	76	75	73	70	60											
SDLM/F-36-4T-3	2.2	1410	61	81	82	85	89	89	90	87	81	72	65						
SDLM/F-39-4T-3	2.2	1410	73	97	100	102	105	113	115	118	119	118	118	113					

Flow margin ±5%
Noise level margin +3...5 db

Dimensions mm



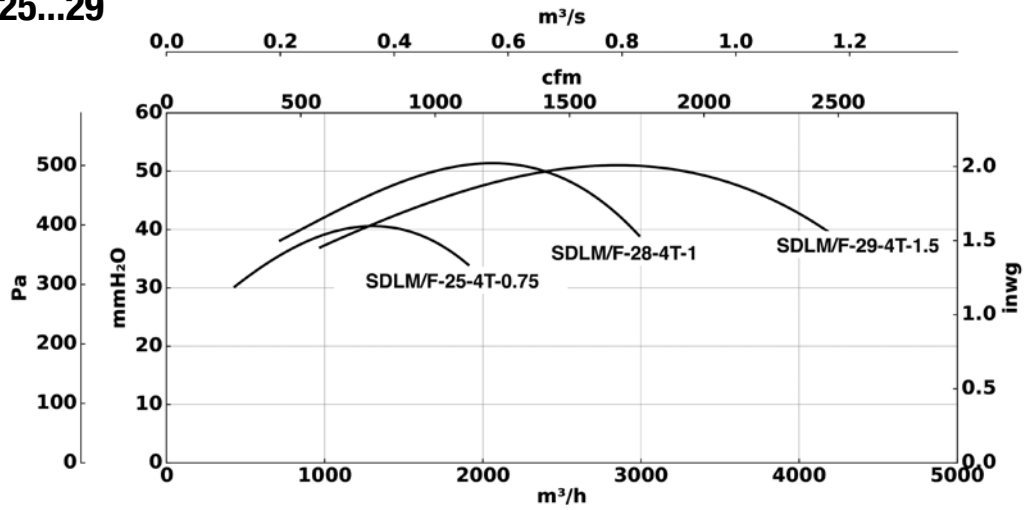
MOD.	kW	r.p.m	A	B	C	F	G	D	D1	m	a x b	Kg
SDLM/F-25-4T-0.75	0.55	1360	520	430	175	190	82	260	280	M6	225 x 160	28
SDLM/F-28-4T-1	0.75	1360	545	485	222	215	94	290	310	M8	250 x 180	30
SDLM/F-29-4T-1.5	1.1	1380	560	485	222	215	94	290	310	M8	250 x 180	35
SDLM/F-33-4T-1.5	1.1	1380	580	570	255	250	104	350	370	M8	296 x 200	50
SDLM/F-36-4T-3	2.2	1410	635	570	255	250	104	380	405	M8	296 x 200	60
SDLM/F-39-4T-3	2.2	1410	635	680	308	300	129	400	430	M8	356 x 250	90

OUTLET NOZZLE

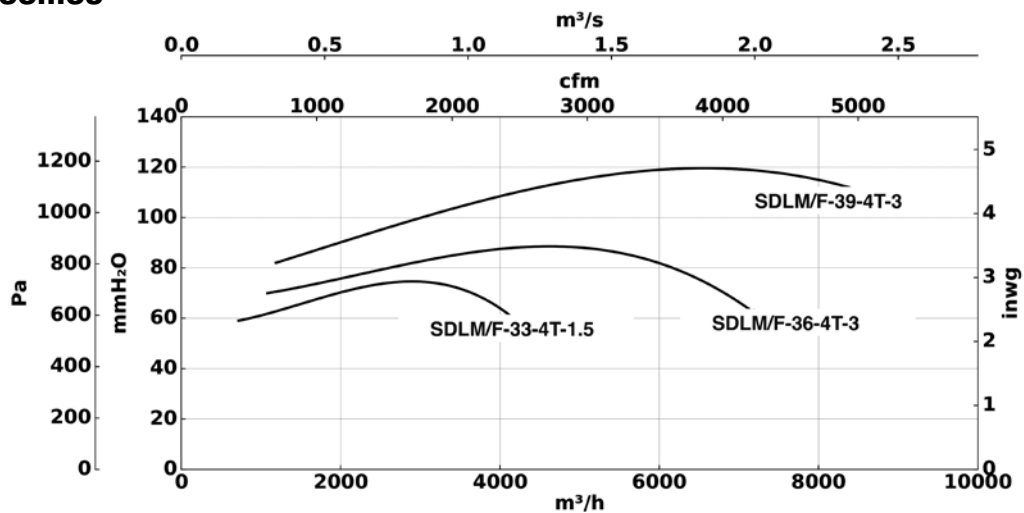
MOD.	a x b	a1	b1	a2	b2	Z	d	d1
SDLM/F-25-4T-0.75	226 x 161	251	186	276	211	10	12	8
SDLM/F-28-4T-1	254 x 185	280	210	304	235	14	12	10
SDLM/F-29-4T-1.5	254 x 185	280	210	304	235	14	12	10
SDLM/F-33-4T-1.5	299 x 205	325	230	349	255	14	12	10
SDLM/F-36-4T-3	299 x 205	325	230	349	255	14	12	10
SDLM/F-39-4T-3	361 x 255	395	285	431	325	14	12	10

Characteristic curves

SDLM/F 25...29



SDLM/F 33...39



Total pressure

Flow margin $\pm 5\%$
 Noise level margin $+3...5$ db
 Margin of kW absorbed $\pm 3\%$